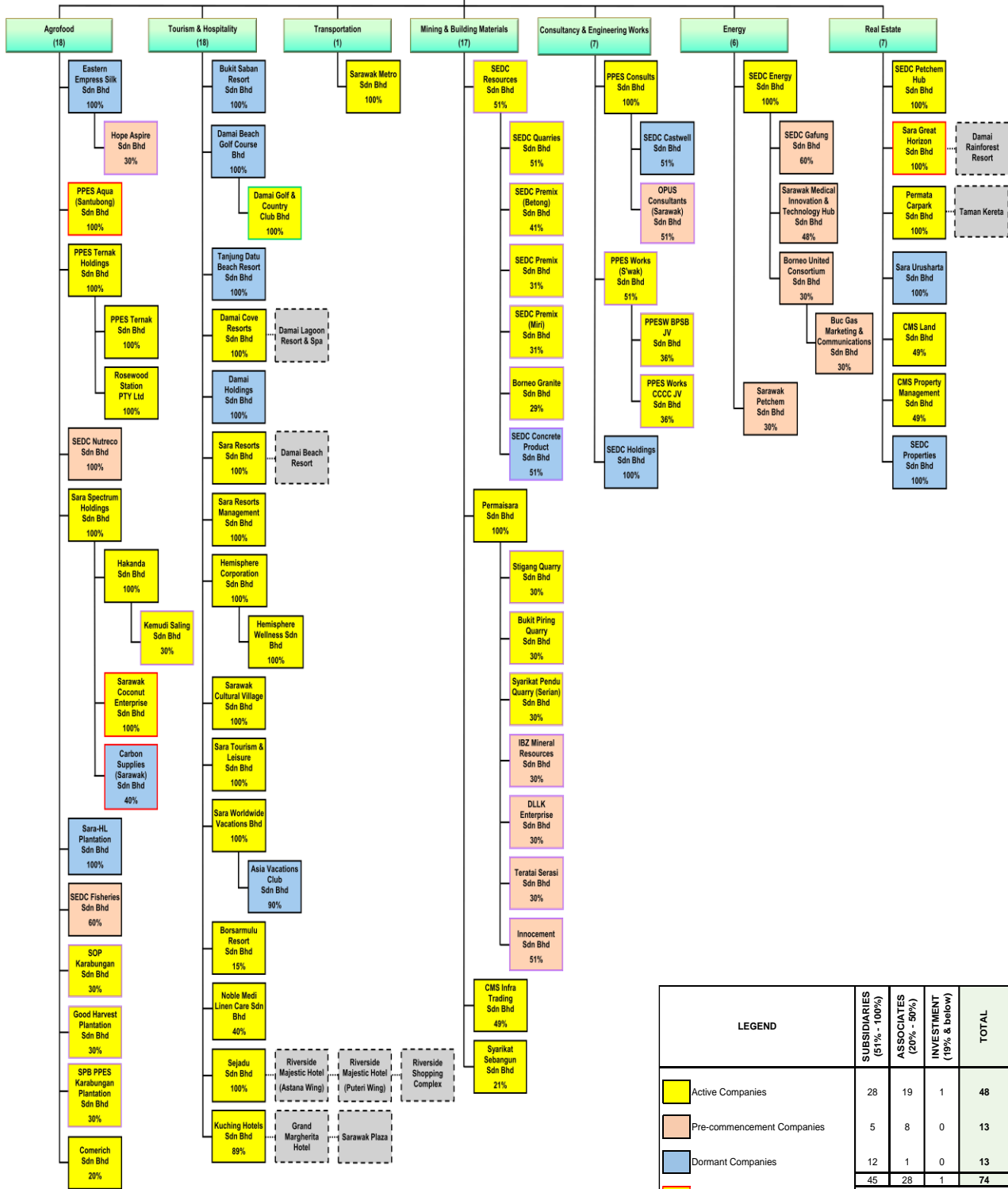


Sarawak Economic Development Corporation



| LEGEND | SUBSIDIARIES | ASSOCIATES | INVESTMENT | TOTAL |
|--|------------------|-------------|---------------|-------|
| | (51% - 100%) | (20% - 50%) | (19% & below) | |
| Active Companies | 28 | 19 | 1 | 48 |
| Pre-commencement Companies | 5 | 8 | 0 | 13 |
| Dormant Companies | 12 | 1 | 0 | 13 |
| Properties/assets of the companies are leased out to 3rd parties | 45 | 28 | 1 | 74 |
| Joint Venture Companies | | | | |
| Direct & Indirect Shareholding | | | | |
| Operating Centres | 23 February 2024 | | | |